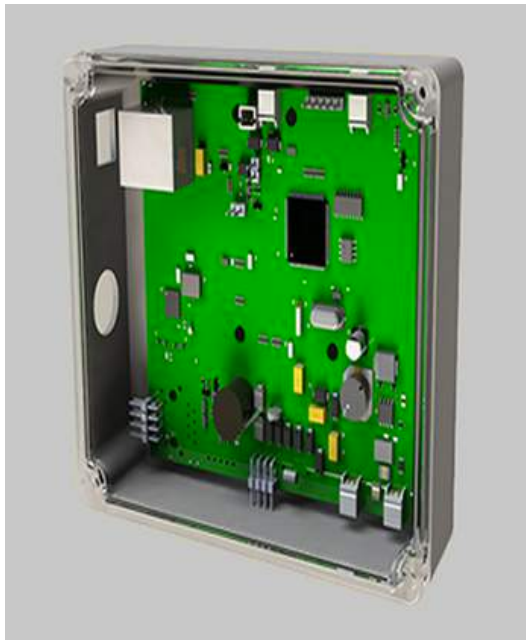


CUS-02 Control Unit



Overview:

The CUS-02 is a complete control unit consisting of:

- a plastic IP-rated housing.
- controls up to two SHE-01 Swing Handles, connects to the readers, communicates to the Cloud and controls other functions if required.
- SDK available in order to control all locks in a system from a management software.

Technical Data

- 10 – 48 VDC Input voltage.
- 10 mA normal operations
150 mA peak power consumption
- +5 - +80C operating temperature.
- controls two doors with a SHE-01 Swing Handle
- IP65, UL and CE tested.
- Dimension 160 x 124 x 52 mm
- BSD style socket API.
- Blocking / non-blocking socket operation and event driven functions.
- Well-crafted TCP module with selective acknowledgement (SACK) and congestion control.
- Raw socket interface.
- Multicast support (IGMPv2 and MLDv1).
- 65,000 tokens memory.
- 65,000 events audit trail.
- 1A / 20 VDC open collector output - flash upgradeable.
- TCP IPv4 and/or IPv6 Dual embedded stack and built in support for multiple network interfaces.
- Fan-racks and other external accessory products can be controlled through the CUS-02.

Applications and Features

Main Feature of the CUS-02 connects to one or two SHE-01 Swing Handles so that no mechanical keys are used when opening an IP-rated steel cabinet. Instead Proximity Cards, One Time Password or Bluetooth Readers are used for an authorized person to open a certain steel cabinet at a certain time.

The CUS-02 is mounted on the inside of the IP-rated steel cabinet, so it's protected from outdoor impacts. The CUS-02 is based on the security and operational requirements for use on outdoor cabinets with IP65 rating and where the cabinets requires to have a locking rod system. The CUS-02 is connected via the Cloud so all authorizations, monitoring is in real time. An unauthorized event triggers an email and/or SMS. Full audit trail of all events in the system.